



Ashcourt Concrete Reinforced Structural Fibres

www.ashcourt.com

About Structural Fibres

The inclusion of the fibres significantly improves the concrete performance and durability. Fibre Reinforcement is an inexpensive, fast and safe alternative to traditional mesh reinforcement.

Adfil's Durus® EasyFinish macro synthetic fibres are a cost-effective solution to replacing mesh or rebar reinforcement. The fibres are premixed with the concrete allowing good placement and 3-dimensional reinforcement throughout the depth of the concrete. By eliminating the mesh, construction time is reduced by not having to cut, fix and tie in the mesh reinforcement.

Durus® EasyFinish Fibres



The pre-mixed fibre reinforced concrete can be placed quickly with minimum labour required. The structural fibres are a polymer-based material and not susceptible to rusting and associated problems which contribute towards the spoiling of concrete.

The Benefits

Benefits include:

- Reduced construction costs over traditional steel
- Reduced handling and installing time
- No issues with placement
- Associated problems with steel rust removed
- Reduction in Health & Safety risk associated with steel mesh

Need someone to speak to?

We have a dedicated team of staff available to talk to about any specific products. We can also offer free, no-obligation technical help to help ensure you get the correct mix for your job.

Ashcourt's Fibre Products

Ashcourt DuraPave

Ashcourt DuraPave is a reinforced concrete which uses macro synthetic fibres instead of using structural steel mesh reinforcement. Not having to use steel mesh reinforcement means that the concrete is cost effective by both removing the need for steel and the fact that the concrete is much easier to construct reducing construction time.



DuraPave Is Perfect For...

Ashcourt's DuraPave project uses are:

- External ground supported slabs for pavements, yards and hard standings
- Farmyards and agricultural roadways
- Car Parks
- Domestic driveways



Concrete Placement

Ashcourt DuraPave is placed using conventional methods like direct discharge, skip or pump. The mix also has no specialist requirements for handling and we recommend a curing membrane be applied after finishing.

Speak To An Expert:

Call: 01482 442288 (Option 3)

Ashcourt DuraPaveX

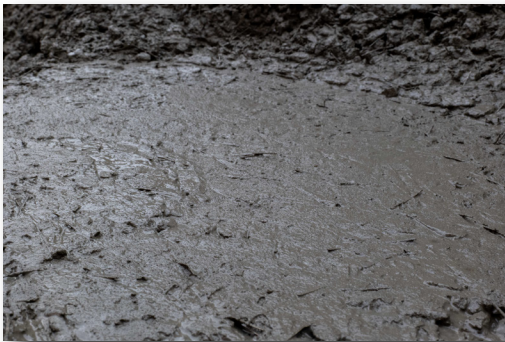
Our DuraPaveX has all of the benefits of Ashcourt's regular DuraPave concrete, but caters for heavier traffic loadings, making this concrete the perfect product for external HGV yards for plant / machinery up to 44T. (Anything above this, please consult a member of staff for direction).

Our DuraPaveX concrete is a strong external paving system with a wide range of applications. With a significant reduction in embedded carbon (60%) compared to steel mesh construction, Ashcourt's DuraPaveX reduces the risk of mesh reinforcement being placed incorrectly and increases Health & Safety hazards. The DuraPaveX provides reliable performance for the customer every time year-round.

DuraPaveX Is Perfect For...

Ashcourt's DuraPaveX project uses are:

- High traffic loading external ground supported slabs for pavements, yards and hard standings
- High traffic loading farmyards and agricultural roadways
- High traffic loading car Parks
- High traffic loading domestic driveways



Concrete Placement

Ashcourt DuraPaveX is placed using conventional methods like direct discharge, skip or pump. The mix also has no specialist requirements for handling and we recommend a curing membrane be applied after finishing.

Speak To An Expert:

Call: 01482 442288 (Option 3)

Ashcourt DuraFloor

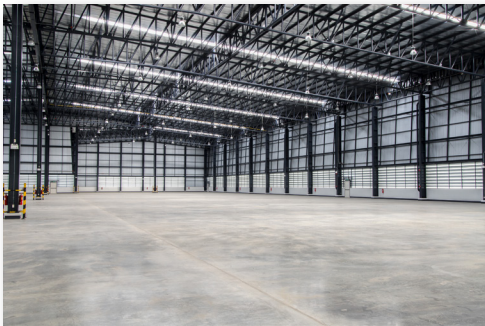
Ashcourt DuraFloor is our specialist mix for internal use. Similar to our DuraPave mix, this mix reduces the need for steel mesh to be used and thanks to Adfil's Durus® EasyFinish, it remains strong enough for forklifts to drive effectively on the surface.



DuraFloor Is Perfect For...

Ashcourt's DuraFloor is the perfect product for projects like:

- General Industrial Flooring
- Workshops
- Agricultural Buildings
- Domestic Floors
- Warehouses



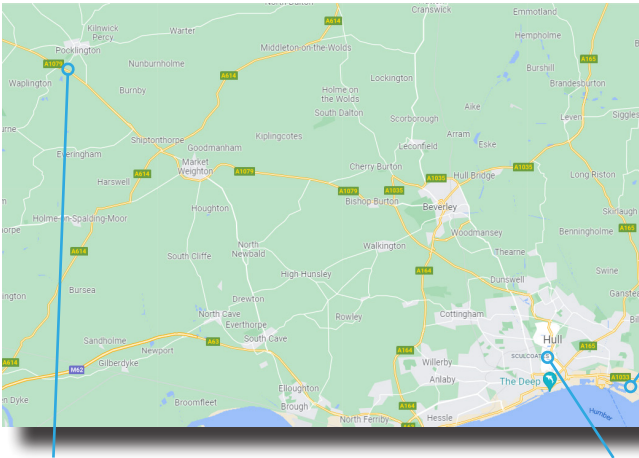
Concrete Placement

Ashcourt DuraFloor is placed using conventional methods like direct discharge, skip or pump. The mix also has no specialist requirements for handling and we recommend a curing membrane be applied after finishing.

Speak To An Expert:

Call: 01482 442288 (Option 3)

We have a range of concrete plants throughout Hull & East Yorkshire



The Docks Concrete Plant

**King George Dock Hull
HU9 5PB**



Pocklington Plant

**Pocklington Industrial Estate
Halifax Way
YO42 1NR**



Hull Plant

**Foster Street
Hull
HU8 8BT**



Concrete Pumping Services

Ashcourt Concrete Pumps provide versatility for placing concrete at ground, below ground and multiple floor levels. Our 24m and 35m boom pumps save time and money on placing concrete where access is an issue. They are used extensively on all types of construction projects from large industrial/commercial schemes to smaller domestic projects.



All of our operators are fully trained to CPCS (Construction Plant Competence Scheme) standard for mobile pump operating, which is refreshed every 3 years to maintain competency.

For availability and hire rates please contact us on info@Ashcourt.com or 01482 442288 option 3.



01482 442288

info@ashcourt.com

www.ashcourt.com